



Mabley Street, London, E9

BUTLER  STAG



Physical viewings taking place

**A beautifully presented
1/2 bedroom top floor
Victorian conversion
located just moments
from Victoria Park and
Homerton station.**

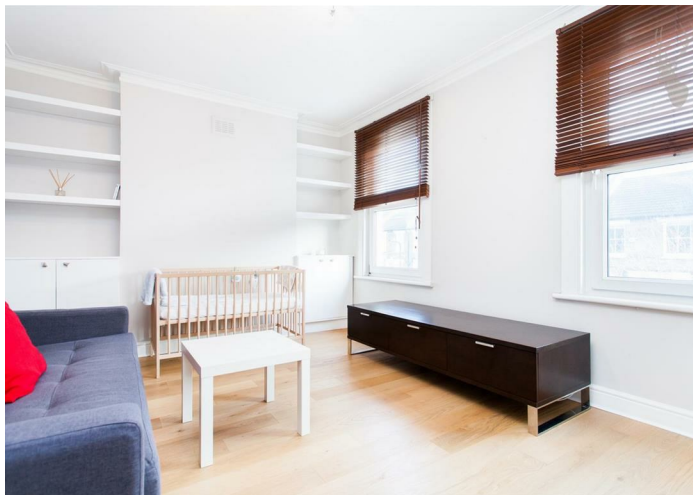


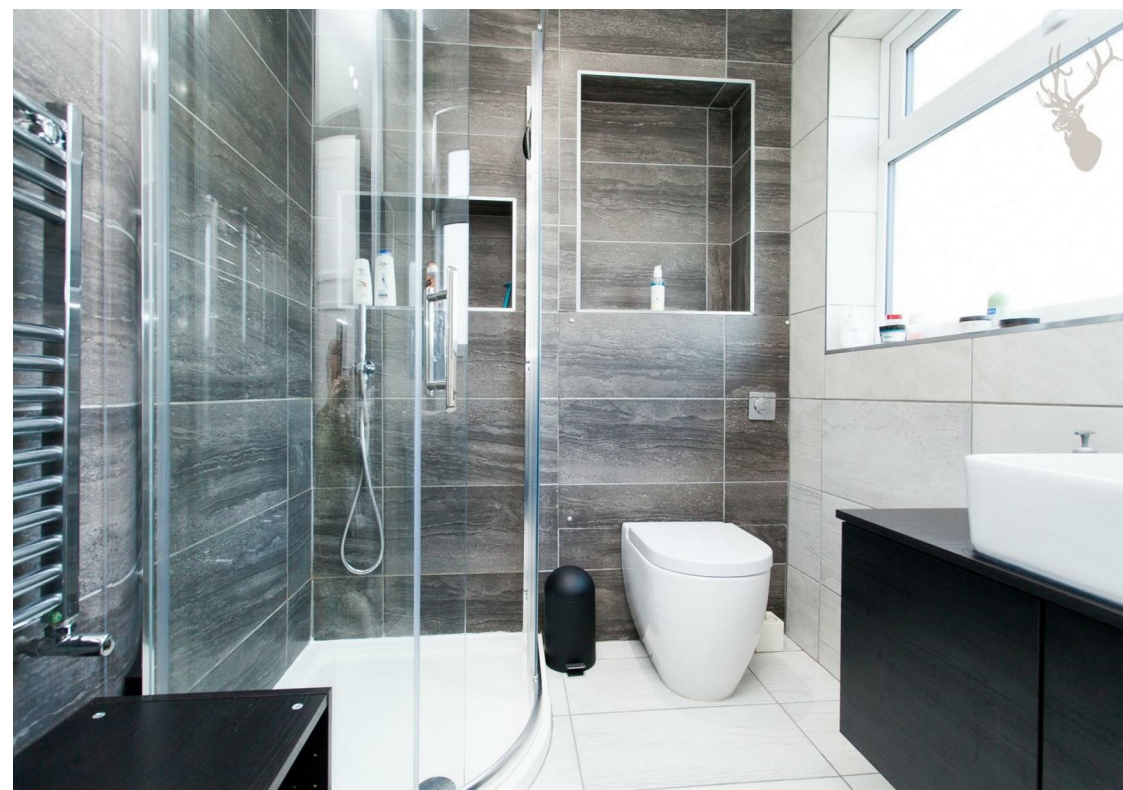
- One/Two Bedroom
- Well Presented
- Top Floor
- Close To Hackney Wick & Chatsworth Road
- Victorian Conversion
- Large Eat-In Kitchen
- Moments From Victoria Park
- Homerton Overground Nearby

Smart one bedroom first floor apartment situated on this delightful turning.

Accommodation includes a good size living room, large double bedroom, separate eat-in kitchen and a stunning bathroom.

Mabley Street is well placed for Victoria Park and Chatsworth Road which has an abundance of coffee shops, restaurants and boutique outlets.





Mabley Street, E9

First Floor



Total area: approx. 47 sq. metres (506 sq. feet)

For illustration purposes only - not to scale

www.lpaplus.co.uk

IMPORTANT NOTICE - These particulars have been prepared in good faith and they are not intended to constitute part of an offer or contract. We have not performed a structural survey on this property and the services, appliances and specific fittings have not been tested. All photographs, measurements, floor plans and distances referred to are given as a guide and should not be relied upon.

BUTLER & STAG

☎ 020 8102 1236

🏠 508 Roman Road, Bow, London, E3 5LU

✉ bow@butlerandstag.com

www.butlerandstag.uk